

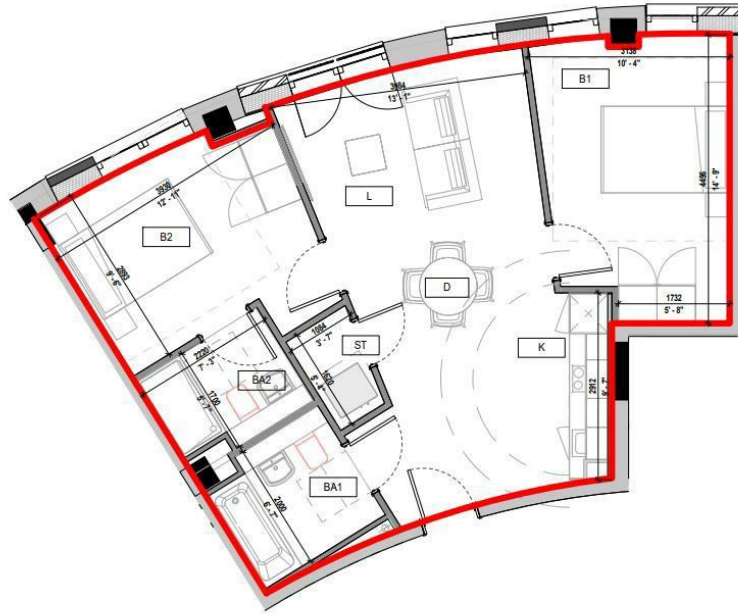


**FLAT 129 SPRINGWELL GARDENS, WHITEHALL ROAD
LEEDS, LS12 1FH**

£1,300 PER MONTH

Move In Before 28th June | Spacious 2 Bed & 2 Bath Flat | Modern Fixtures Throughout | North Facing |
Low Deposit Option | Terrace areas | Bike Storage

MONROE
SELLERS OF THE FINEST HOMES



Note: Apartment Area and dimensions subject to Detailed Design and Construction tolerances

Springwell Gardens
Apartment - A703



Energy Efficiency Rating		Current	Potential
Very energy efficient - lower running costs			
(92 plus) A			
(81-91) B		86	86
(69-80) C			
(55-68) D			
(39-54) E			
(21-38) F			
(1-20) G			
Not energy efficient - higher running costs			
England & Wales		EU Directive 2002/91/EC	

Agents Note: Whilst every care has been taken to prepare these particulars, they are for guidance purposes only. All measurements are approximate and are for general guidance purposes only and whilst every care has been taken to ensure their accuracy, they should not be relied upon and potential buyers/tenants are advised to recheck the measurements

Monroe Lettings and Property
Management
Whitehall Road
Leeds
LS12 1FJ

0113 350 0866
hello@monroelettings.com
www.monroelettings.com

MONROE

SELLERS OF THE FINEST HOMES